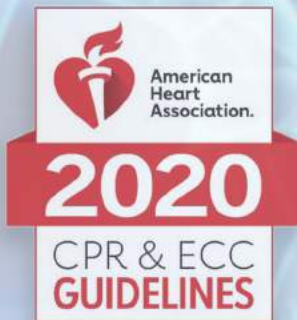




LONG BEACH
3605 Long Beach Blvd #332, Long Beach Ca 90807

FOUNTAIN VALLEY
18122 Brookhurst #B, Fountain Valley Ca 92708

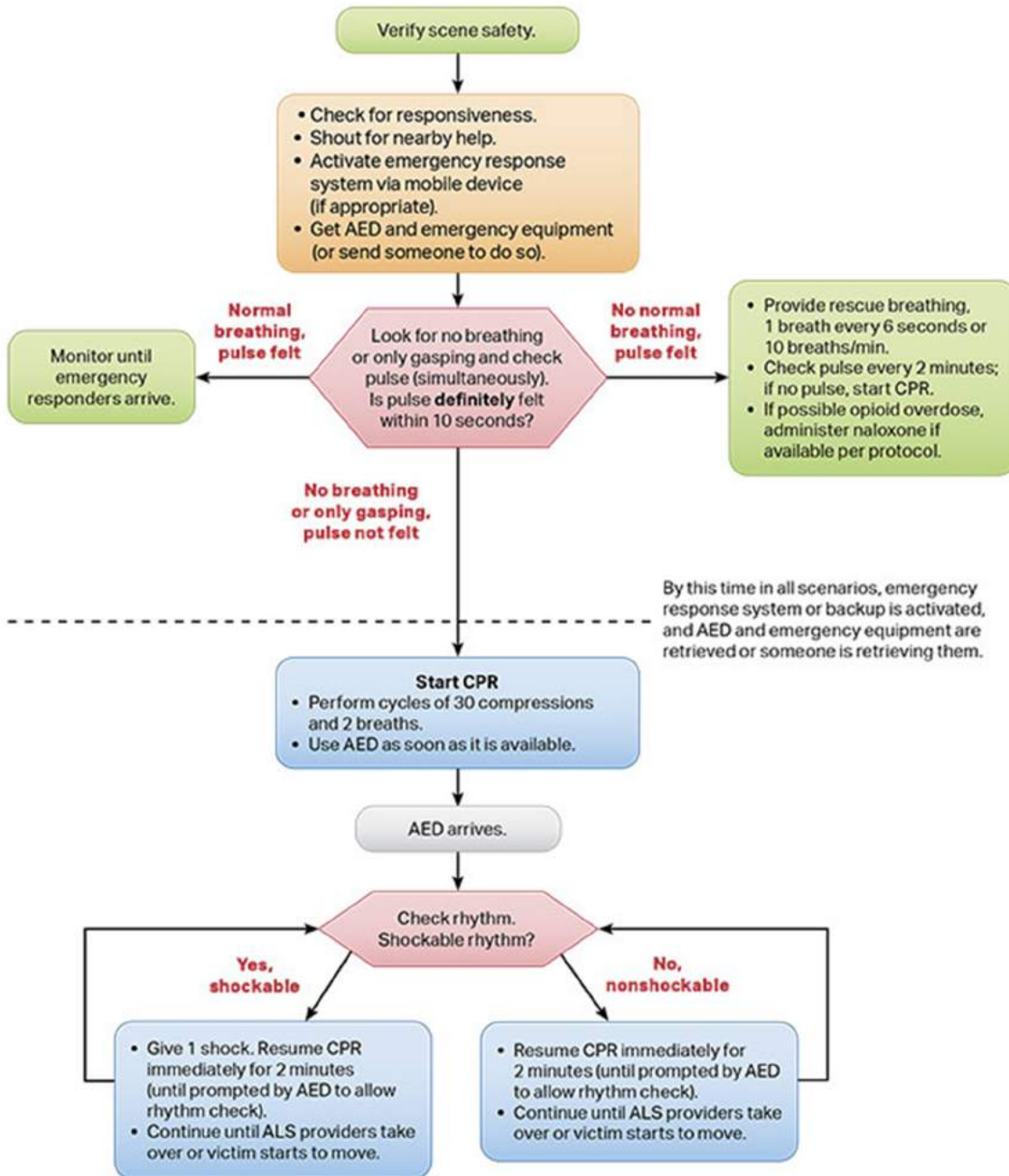
Call or Text (714) 396-0266



BLS

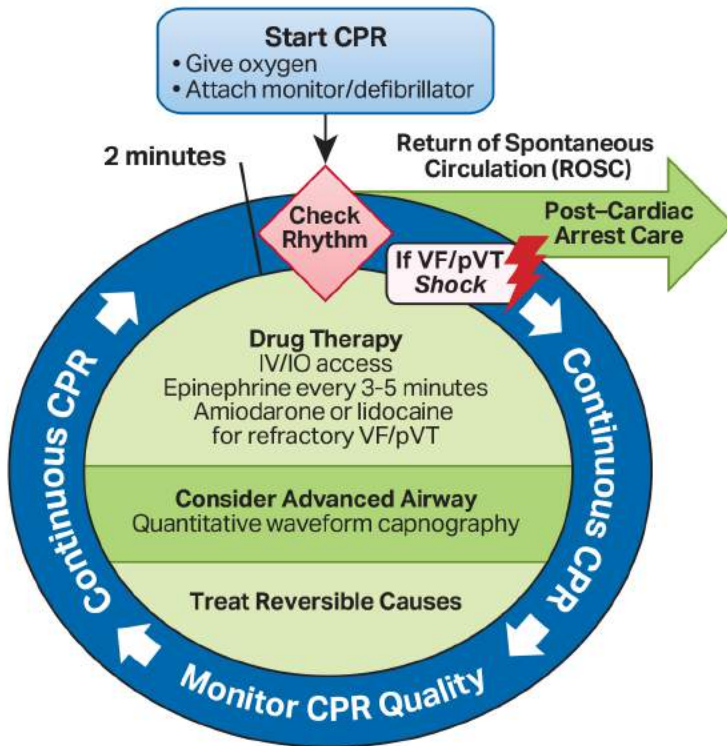
BASIC LIFE SUPPORT

Adult Basic Life Support Algorithm for Healthcare Providers



© 2020 American Heart Association

Adult Cardiac Arrest Circular Algorithm



CPR Quality

- Push hard (at least 2 inches [5 cm]) and fast (100-120/min) and allow complete chest recoil.
- Minimize interruptions in compressions.
- Avoid excessive ventilation.
- Change compressor every 2 minutes, or sooner if fatigued.
- If no advanced airway, 30:2 compression-ventilation ratio.
- Quantitative waveform capnography
 - If PETCO₂ is low or decreasing, reassess CPR quality.

Shock Energy for Defibrillation

- **Biphasic:** Manufacturer recommendation (eg, initial dose of 120-200 J); if unknown, use maximum available. Second and subsequent doses should be equivalent, and higher doses may be considered.
- **Monophasic:** 360 J

Drug Therapy

- **Epinephrine IV/IO dose:** 1 mg every 3-5 minutes
- **Amiodarone IV/IO dose:** First dose: 300 mg bolus. Second dose: 150 mg.
or
- **Lidocaine IV/IO dose:** First dose: 1-1.5 mg/kg. Second dose: 0.5-0.75 mg/kg.

Advanced Airway

- Endotracheal intubation or supraglottic advanced airway
- Waveform capnography or capnometry to confirm and monitor ET tube placement
- Once advanced airway in place, give 1 breath every 6 seconds (10 breaths/min) with continuous chest compressions

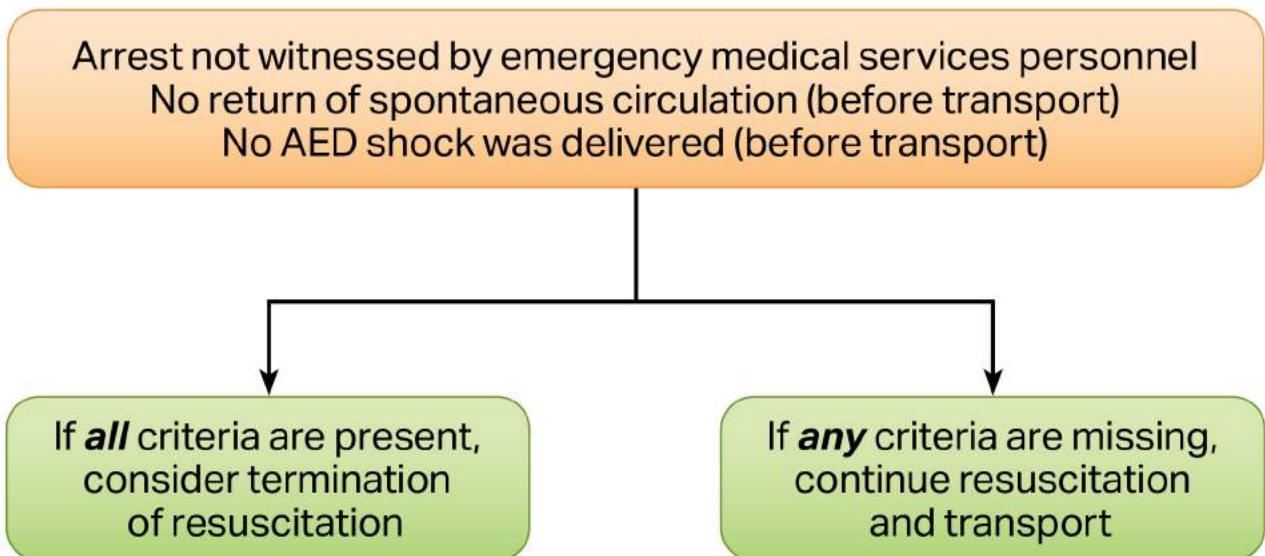
Return of Spontaneous Circulation (ROSC)

- Pulse and blood pressure
- Abrupt sustained increase in PETCO₂ (typically ≥40 mm Hg)
- Spontaneous arterial pressure waves with intra-arterial monitoring

Reversible Causes

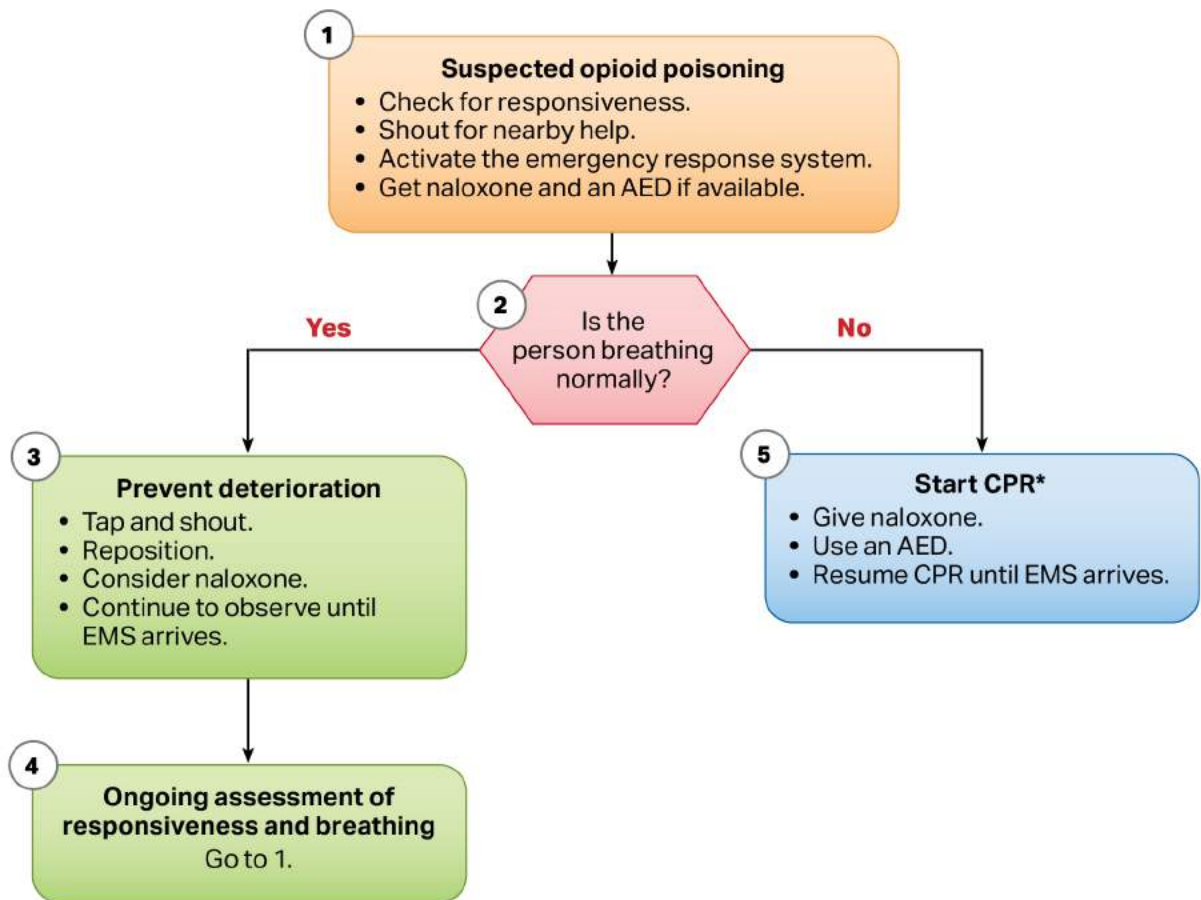
- | | |
|---------------------------|-------------------------|
| • Hypovolemia | • Tension pneumothorax |
| • Hypoxia | • Tamponade, cardiac |
| • Hydrogen ion (acidosis) | • Toxins |
| • Hypo-/hyperkalemia | • Thrombosis, pulmonary |
| • Hypothermia | • Thrombosis, coronary |

BLS Termination of Resuscitation



© 2020 American Heart Association

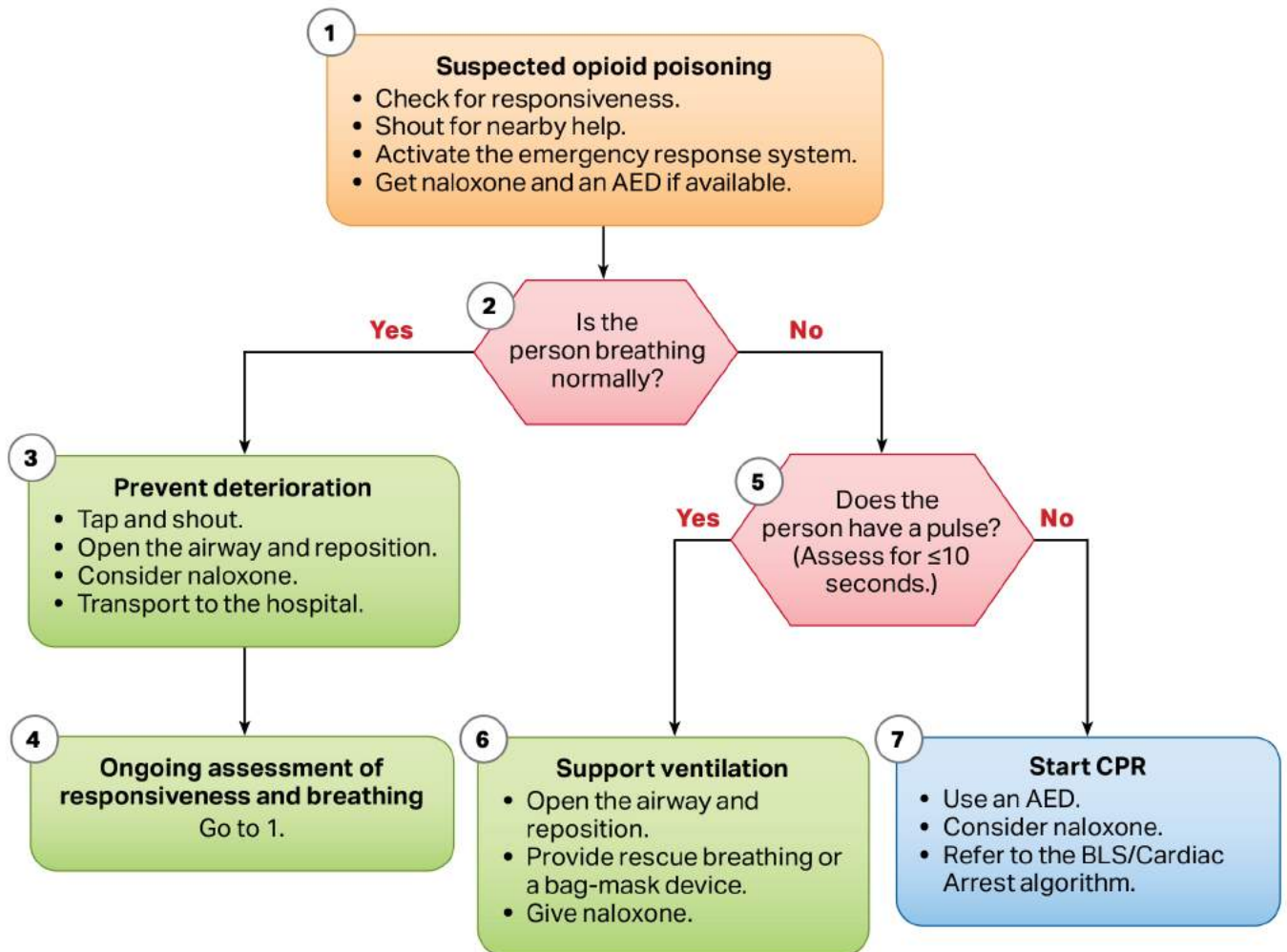
Opioid-Associated Emergency for Lay Responders Algorithm



*For adult and adolescent victims, responders should perform compressions and rescue breaths for opioid-associated emergencies if they are trained and perform Hands-Only CPR if not trained to perform rescue breaths. For infants and children, CPR should include compressions with rescue breaths.

© 2020 American Heart Association

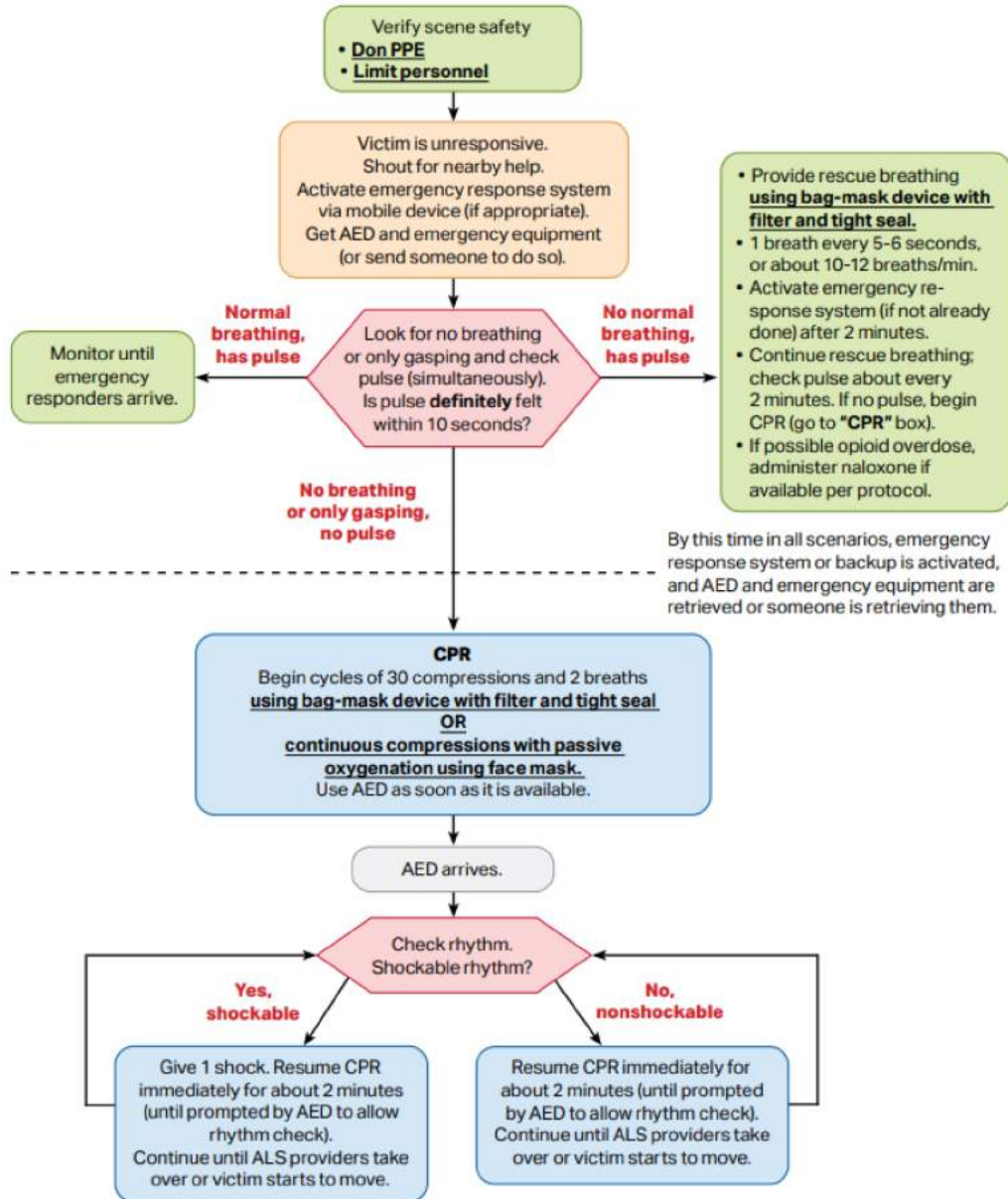
Opioid-Associated Emergency for Healthcare Providers Algorithm



© 2020 American Heart Association

BLS Healthcare Provider Adult Cardiac Arrest Algorithm for Suspected or Confirmed COVID-19 Patients

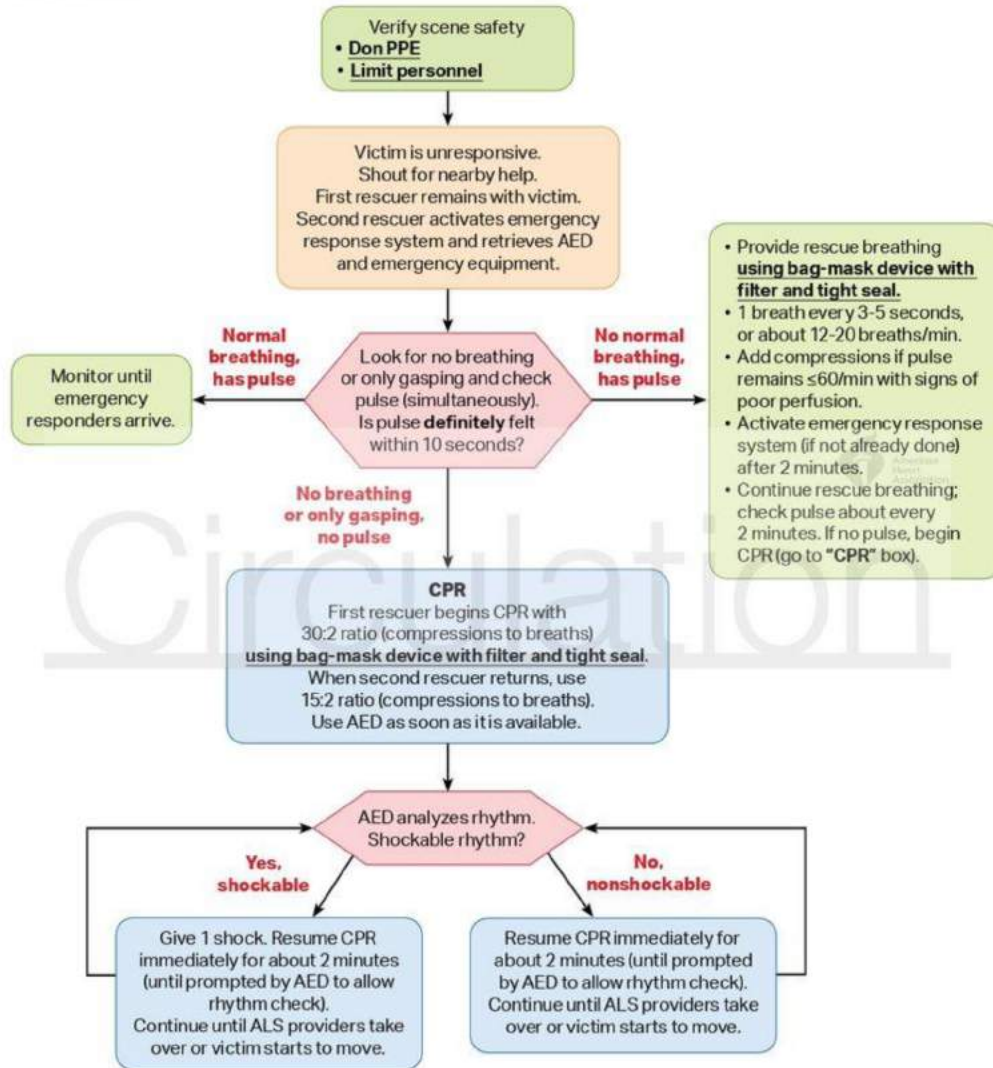
Updated April 2020



© 2020 American Heart Association

**BLS Healthcare Provider
Pediatric Cardiac Arrest Algorithm for 2 or More Rescuers
for Suspected or Confirmed COVID-19 Patients**

Updated April 2020



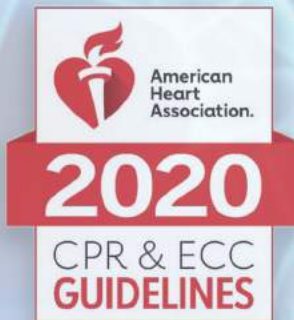
Downloaded from <http://ahajournals.org> by on May 25, 2020



LONG BEACH
3605 Long Beach Blvd #332, Long Beach Ca 90807

FOUNTAIN VALLEY
18122 Brookhurst #B, Fountain Valley Ca 92708

Call or Text (714) 396-0266



BLS

BASIC LIFE SUPPORT